



PLEXIGLAS®
BY ARKEMA

Plexiglas® MC Edge Color Series

ACRYLIC SHEET

Beauty that's clearly on the edge.

Plexiglas® MC Edge Color acrylic sheet appears virtually colorless, until your view is drawn to the edge as it explodes in dramatic fashion. Subtle on the surface and intense at the edges, the Plexiglas® MC Edge Color Series acrylic sheet includes two reds, orange, yellow and a scintillating turquoise blue. In addition to classic 3030 Glass Green and 3120 Ice Blue.

- **Edges explode in vivid color**
- **High optical clarity**
- **Dresses up sign holders**
- **Great for routed logos**
- **Fabricates and thermoforms as easily as standard acrylic**

Plexiglas® MC Edge Color Series

ACRYLIC SHEET

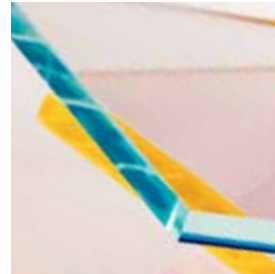
Give your displays, fixtures and shelving the edge with Plexiglas® MC Edge Color acrylic sheet. The see-through face makes it outstanding for sign holders. Plexiglas® MC acrylic sheet brings you all that you have come to expect from the most recognizable name in acrylic sheet. The Edge Color Series cuts, routs, drills, cements, polishes and thermoforms easily and with no special tools or new techniques.

Call to discuss a custom color combination to match your retail image. For more information, contact your local Altuglas International sales representative or call (800) 523-7500.

PRODUCT OFFERING

THICKNESS	SHEET SIZE
0.118"	48" x 96"
0.177"	51" x 100"
0.236"	60" x 96"
0.354"	72" x 96"

All thicknesses available in all sheet sizes. The Plexiglas® MC Edge Color Series acrylic sheet is film masked. Other thicknesses and sizes are subject to minimum order requirements and are quoted upon request.



COLOR OFFERING

	Edge Color #	Equivalent Frosted Color #
GREEN	3030	3167
BLUE	3120	3163
BLUE	3215	3237
RED	3216	3230
RED	3217	3231
ORANGE	3218	3238
ORANGE	3219	3239

Plexiglas® acrylic plastic is a combustible thermoplastic. Observe fire precautions appropriate for comparable forms of wood and paper. For building uses, check code approvals. Impact resistance is a factor of thickness. Avoid exposure to heat or aromatic solvents. Clean with soap and water. Avoid abrasives.

The statements, technical information and recommendations contained herein are believed to be accurate as of the date hereof. Since the conditions and methods of use of the product and of the information referred to herein are beyond our control, Arkema expressly disclaims any and all liability as to any results obtained or arising from any use of the product or reliance on such information; NO WARRANTY OF FITNESS FOR ANY PARTICULAR PURPOSE, WARRANTY OF MERCHANTABILITY OR ANY OTHER WARRANTY, EXPRESS OR IMPLIED, IS MADE CONCERNING THE GOODS DESCRIBED OR THE INFORMATION PROVIDED HEREIN. The information provided herein relates only to the specific product designated and may not be applicable when such product is used in combination with other materials or in any process. The user should thoroughly test any application before commercialization. Nothing contained herein constitutes a license to practice under any patent and it should not be construed as an inducement to infringe any patent and the user is advised to take appropriate steps to be sure that any proposed use of the product will not result in patent infringement.

See MSDS for Health & Safety Considerations.
Altuglas® and Plexiglas® are registered trademarks of Arkema.
©2013 Arkema Inc. All rights reserved.

Altuglas International
Arkema Inc.
100 PA Rt.413
Bristol, PA 19007
Tel: 800.523.7500
Fax: 215.826.2698
www.plexiglas.com